



105 West Plaza, Town Lane, Staines-Upon-Thames, TW19 7FG

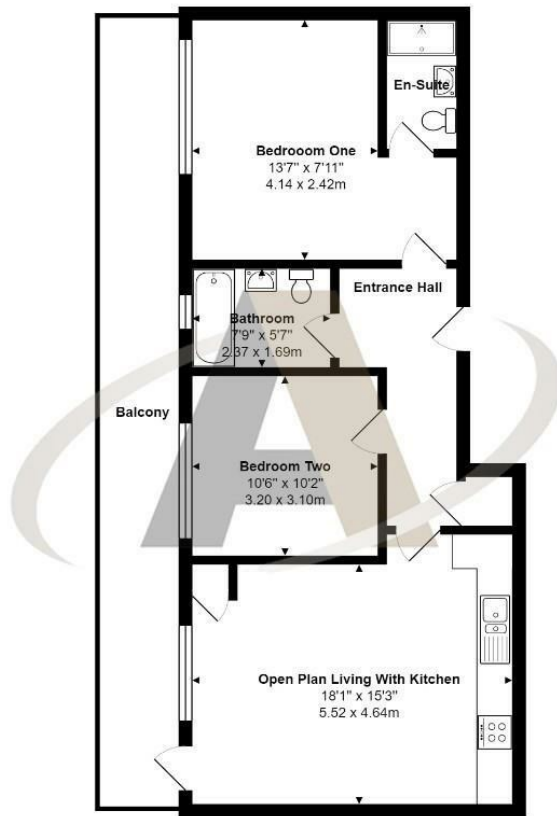
OIEO £300,000

105 West Plaza, Town Lane, Staines-Upon-Thames, TW19 7FG

This two bedroom top floor apartment is situated in the popular West Plaza development with a large balcony area which stretches the length of the apartment. Accommodation comprises of an open plan living room, dining room and kitchen area and two double bedrooms. Other notable features include en-suite shower room to bedroom one, bathroom, gas central heating, double glazing, large balcony with views of the reservoir. The property also benefits from being a short distance to Ashford railway station and has good road links to the M25.



Floor Plan



West Plaza, Town Lane, Stanwell, TW19 7FG

Total Area: 724 ft² ... 67.3 m² (excluding balcony)

All measurements are approximate and for display purposes only



Features

- Two Double Bedrooms
- Views Of The Reservoir
- En-Suite
- Well Kept Communal Grounds
- Large Balcony
- Open Plan Living Area
- Gas Central Heating

